



# REDD+ B E L I Z E

Reducing Emissions from Deforestation and Forest Degradation

**B E L I Z E**

RPP Presentation

PC 17

Lima, Peru

3<sup>rd</sup> July, 2014

Tanya Santos Neal

Dr. Percival Cho





**REDD+**  
Reducing Emissions from Deforestation and Forest Degradation



# Content

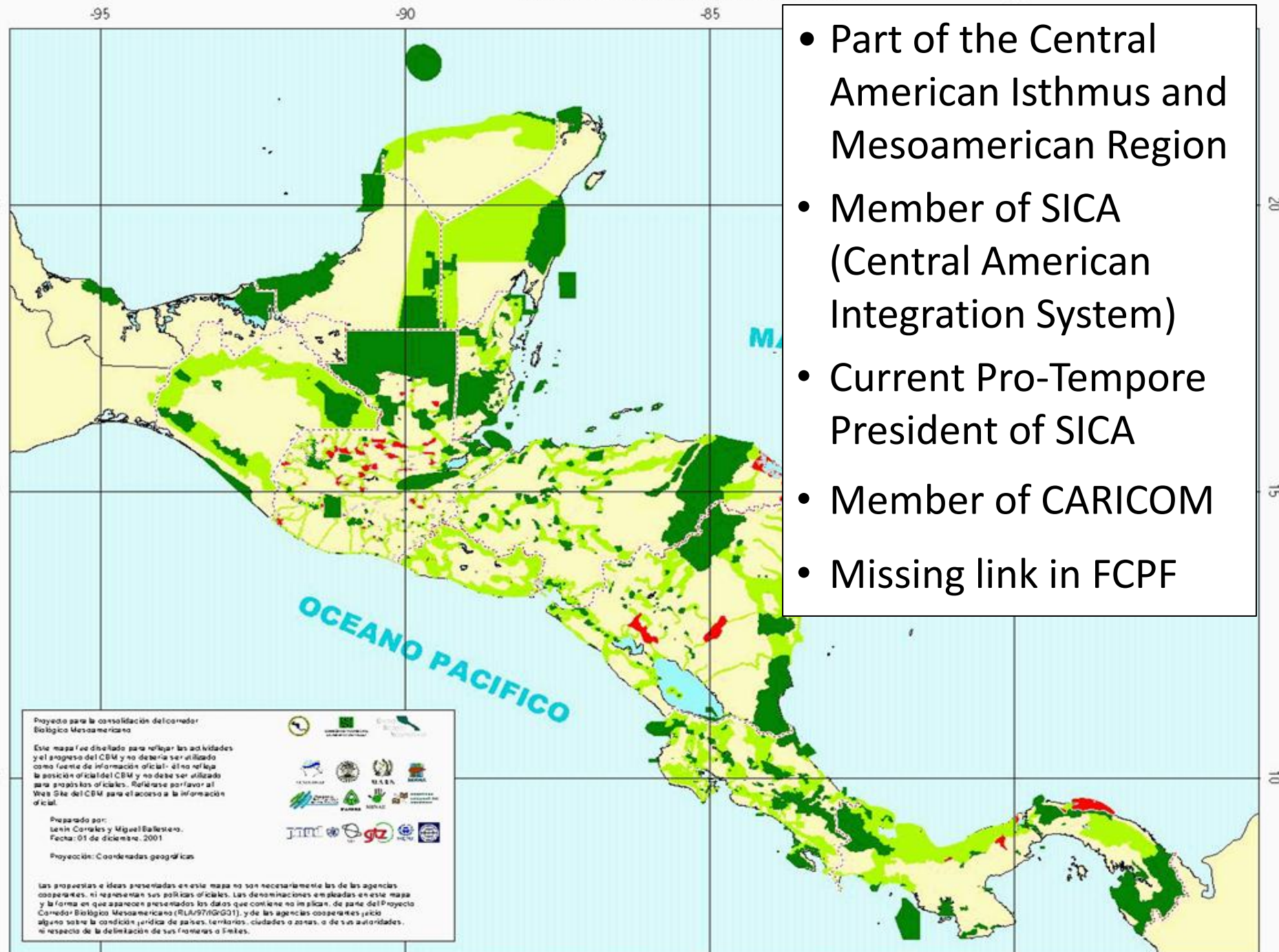
---

- Country Context
- C1: Organize and Consult
- C2: REDD+ Strategy Options
  - Land use/Land use change drivers
  - Policy & Incentive based interventions
  - Critical Issues & RPP Activities to address these
- C3: Reference Levels
- C4: Forest and Safeguards Monitoring
- C6: Program Monitoring
- C5: Budget

# Country Context

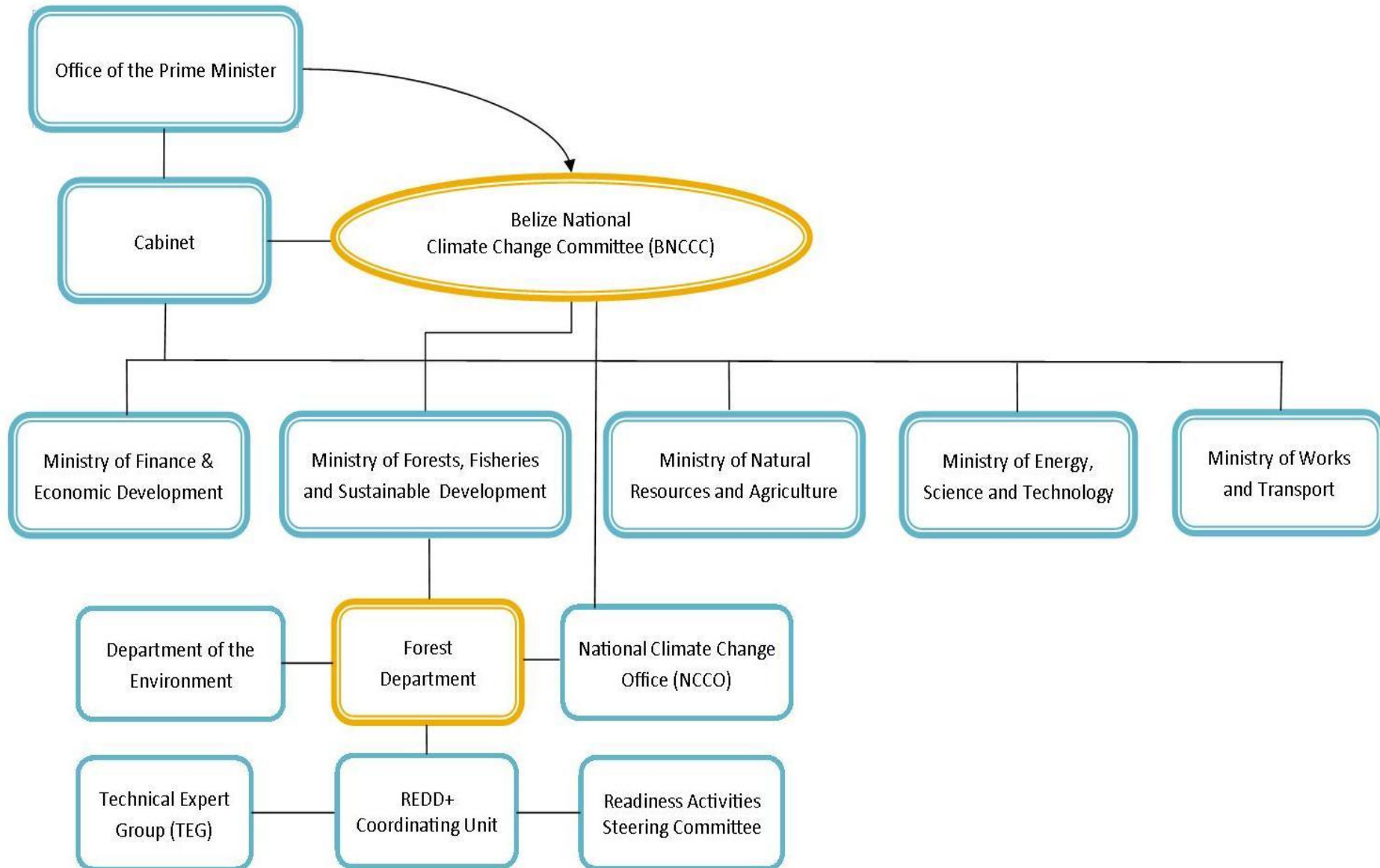


- 8,867 mi<sup>2</sup> (22,151 km<sup>2</sup> )
- Natural resource based economy (agriculture and tourism)
- Population: 333,000 (2014 est)
- Growth rate: 2.3%
- 43% poverty
- English speaking





# 1a. Belize National Climate Change Committee Structure





**REDD+**  
Reducing Emissions from Deforestation and Forest Degradation

# 1b. Early Dialogue with Stakeholders

---

- August-September 2013
- 6 major stakeholder groups
  - Government Agencies
  - CSOs
  - Private Sector
  - Indigenous Maya Communities
  - Non-Indigenous Communities
  - Academia





**REDD+**  
Reducing Emissions from Deforestation and Forest Degradation



## 1b. Early Dialogue with Stakeholders

- Objectives of the Early Dialogue Process
  - Stakeholder feedback and input
  - Establish Communication Process
  - Develop an Inclusive RPP
- Results
  - 239 individuals
  - 71 Organizations/Agencies
  - 91 Villages



**REDD+**  
Reducing Emissions from Deforestation and Forest Degradation



## 1b. Early Dialogue with Indigenous Maya

- ***Session 1*** - Information Sharing Session with the Toledo Alcaldes Association's Executive Body and development of a Consultation Protocol.
- ***Session 2*** - Indigenous Peoples' Representative *Orientation* Workshop with the Alcaldes and Chairpersons of the 39 Maya villages.
- ***Session 3*** – Indigenous People Representatives *Consultation* Workshop with Alcaldes and Chairpersons from the 39 Maya Villages
- ***Session 4*** - Indigenous Women and Youths Consultation Workshop with Toledo Maya Women's Council and Maya Youth Coalition





**REDD+**  
Reducing Emissions from Deforestation and Forest Degradation

## 1b. Key Issues from Early Dialogue

- Gender Participation
- Education and Awareness
- Indigenous Maya Land Rights
- Drivers of Deforestation
- Rural Livelihoods





**REDD+**  
Reducing Emissions from Deforestation and Forest Degradation



# 1c. Consultation and Participation Plan

---

- Public Awareness and Capacity Building
- Lines of Communication
- Stakeholder Engagement
- Indigenous People and Local Communities
- Gender Considerations
- Timing



**REDD+**  
Reducing Emissions from Deforestation and Forest Degradation

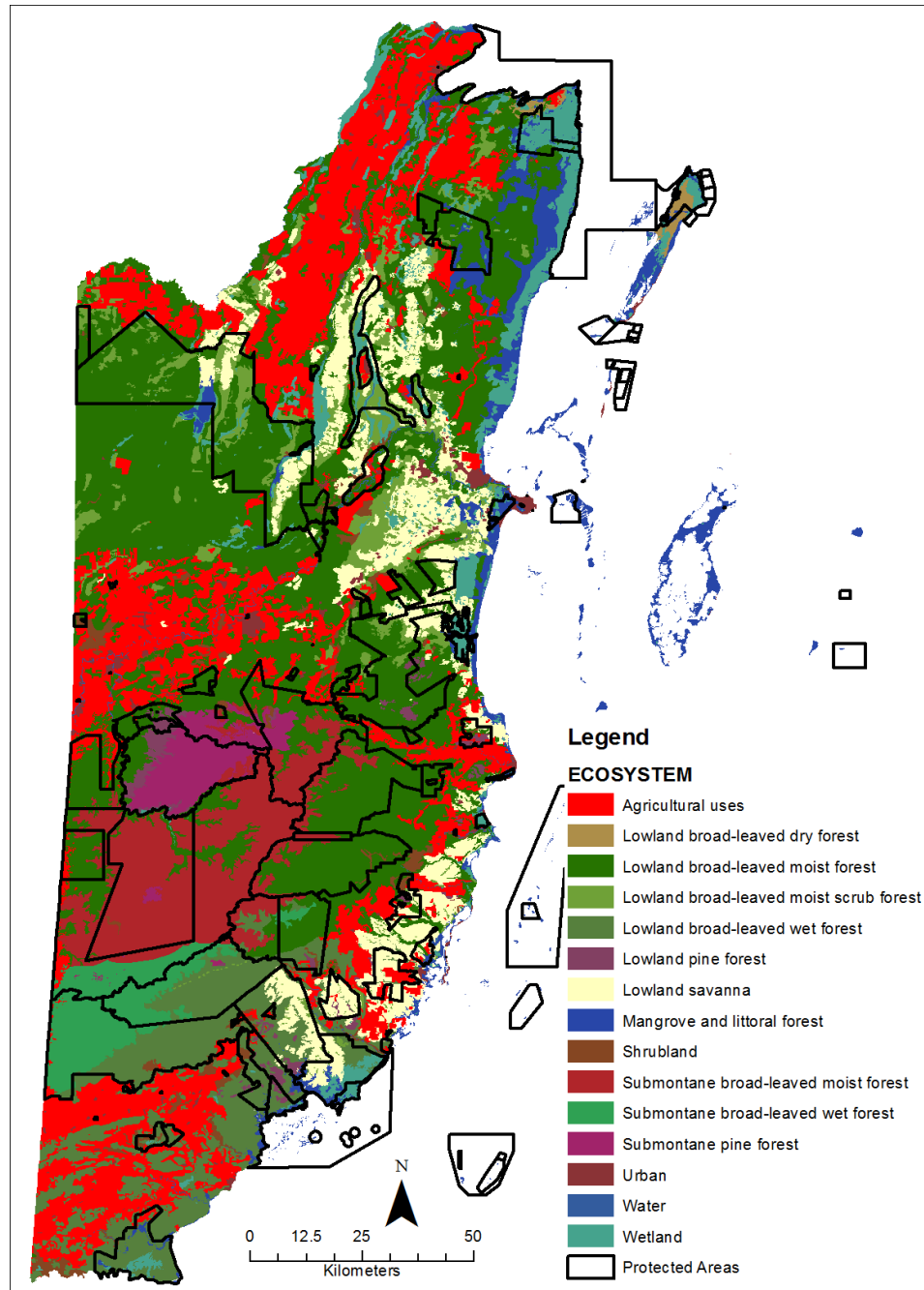


# 1c. Consultation Methodology

---

- Informational Materials and Web page
- Workshops
- Community Meetings
- Community Planning Groups
- REDD+ Roundtable for IPs
- Media Outreach

# Forest Type Distribution





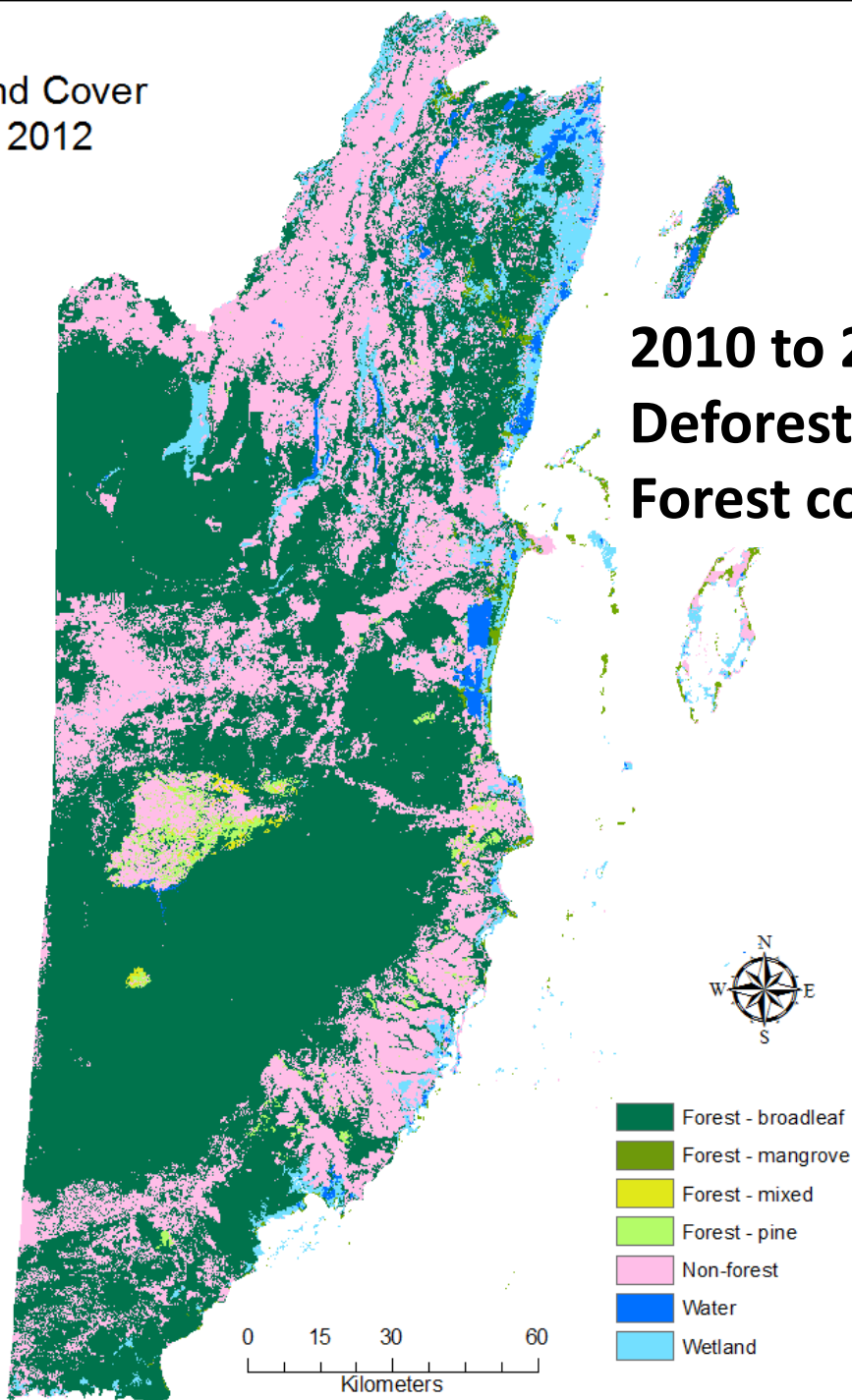
Land Cover  
2012

# Land Use Change

**2010 to 2012**

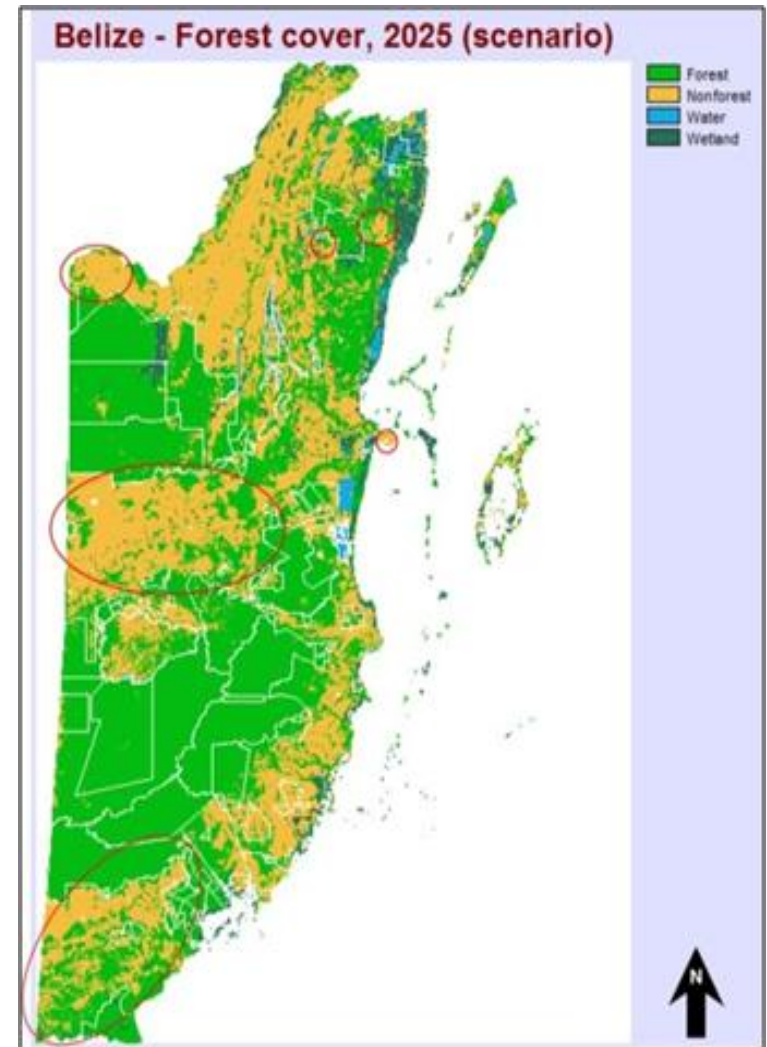
**Deforestation rate: 0.9% (11,700 ha/yr)**

**Forest cover: 61.6%**



# Land Use/Land Use Change Drivers

- Deforestation Drivers
  - Agriculture Expansion
  - Infrastructure Expansion
  - Unsustainable and Illegal Logging
  - Hurricanes, Pests and Wildfires



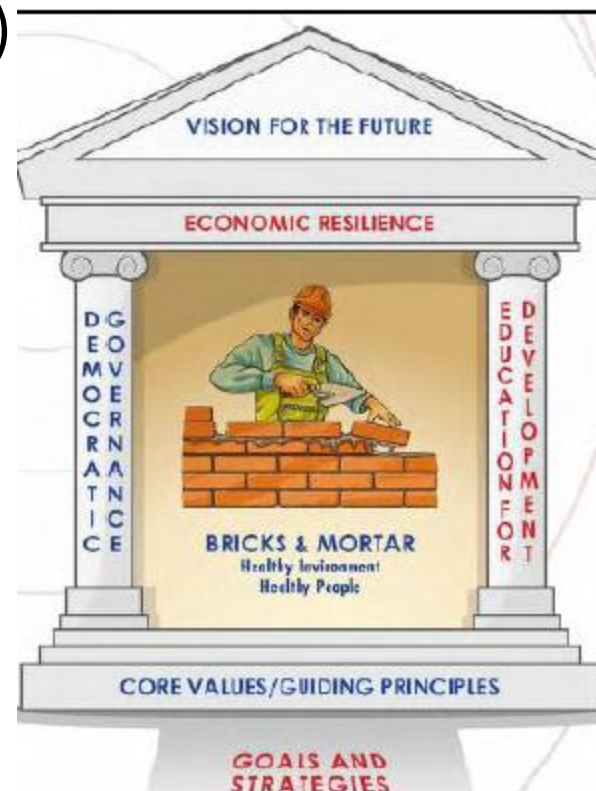


# Policy, Law and Governance

## Horizon 2030

(National Development Framework)

- Belize is a country of peace and tranquility, where ***citizens live in harmony with the natural environment*** and enjoy a high quality of life. Belizeans are an energetic, resourceful and independent ***people looking after their own development in a sustainable way.***





**REDD+**  
Reducing Emissions from Deforestation and Forest Degradation



# Policy, Law and Governance

- Forest Management
  - Forest Policy (under review BMZ/GIZ funded Selva Maya regional project)
  - Forests Act (review programmed for 2014 via GEF funded, WB implemented project)
  - Environmental Protection Act (review programmed for 2014 via GEF funded, WB implemented project)
  - National Parks System Act (review via a GEF funded, UNDP implemented project)



## 2b. Policy and Incentive Based Interventions

Driver	Policy Based Interventions	Incentive Based Interventions
Agriculture	Implement National Land Use Policy and Planning Framework	Amend Land Tax Act to incentivize maintenance of forest cover
	Implement sustainable agricultural practices	Certification of organic/ sustainable agriculture farms, including livestock
	Formal planning and collaboration MNRA/ MFFSD	Implement KBA Project related components
	Implement KBA Project related components	
Infrastructure Expansion	Implement National Land Use Policy and Planning Framework	
Unsustainable and Illegal Logging	Revise silvicultural system and legislate the change	Wood Certification (reduced wood tax on certified wood)
	Legislate enrichment planting post-logging operations	Reduce rate of land tax on forested lands
	Legislate Adoption of the Reduced Impact Logging and the Harvesting Code for Belize	
	Institute a “Wood” Tax	Lower “Wood Tax” rates on Certified Products
	Implement KBA Project related components	Implement KBA Project related components
Hurricanes, Pests and Wildfires	Implementation of Strategy to Guide the Response to Hurricane Damage in Belize’s Forests	
	Review and strengthen Agriculture Fires Act as necessary	
	Implementation of Wildland Fire Management Strategy	
	Implement KBA Project related components	Implement KBA Project related components



## 2C. Agencies in REDD+ Implementation Framework

---

- ✓ Forest Department
- ✓ Department of Environment
- ✓ Lands and Surveys Department
- ✓ Agriculture Department
- ✓ Protected Areas Conservation Trust
- ✓ MFFSD
- ✓ MNRA
- ✓ Office of the Prime Minister
- ✓ MFED
- ✓ MLGRD
- ✓ Toledo Alcaldes Association
- ✓ NAVCO
- ✓ DAVCO
- ✓ Women's Issues Network
- ✓ APAMO
- ✓ Belize Agro-Productive Sector Group
- ✓ SFM Licensees
- ✓ IICA
- ✓ The Nature Conservancy



**REDD+**  
Reducing Emissions from Deforestation and Forest Degradation



# Critical Issue & Readiness Response

---

- Strengthening of Policies and Legislation to support REDD+ Implementation
  - Land Tenure and Carbon Rights
  - JNR
  - Benefits Sharing Mechanism
  - Revision of National Forest Policy & Legislation
  - Analysis of Sector Policies and Strategies
  - Implement LUP
  - Implement Wildland Fire Management Strategy
  - Develop National Forest Strategy
  - Strengthen PSP Network
  - Climate Change and REDD+ Policies and LCDS



**REDD+**  
Reducing Emissions from Deforestation and Forest Degradation



# Critical Issue and Readiness Response

---

- Strengthening of National Capacity and Institutional Arrangements for REDD+
  - National FIS and REDD+ Registry
  - Examine Options for Management of REDD Funds
  - Collaboration and Planning MNRA/MFFSD
  - Monitoring and Compliance Unit for FD
  - Formalize Planning with social partners
  - BNCCC, RASC, TEG, RCU
  - Grievance Redress Mechanism
  - REDD+ Program Monitoring
  - REDD+ Communications Strategy
  - REDD+ National Training Strategy





**REDD+**  
Reducing Emissions from Deforestation and Forest Degradation



# Relations with Maya of Toledo

---

- Communal Land Rights Case in appeal at Caribbean Court of Justice
- REDD+ Early Dialogue Discussions
- REDD+ Consultation Protocol with Indigenous Maya
- Relationship DOES exist but it is not without challenges
- BUT...there is willingness to dialogue on both sides



**REDD+**  
Reducing Emissions from Deforestation and Forest Degradation

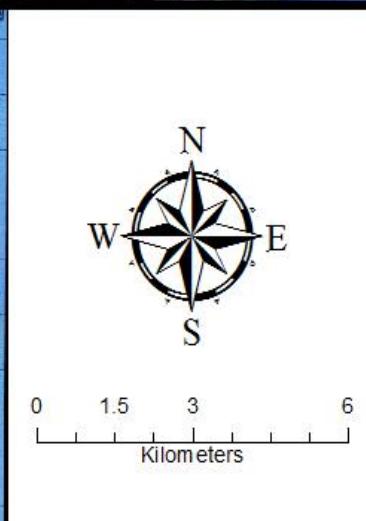
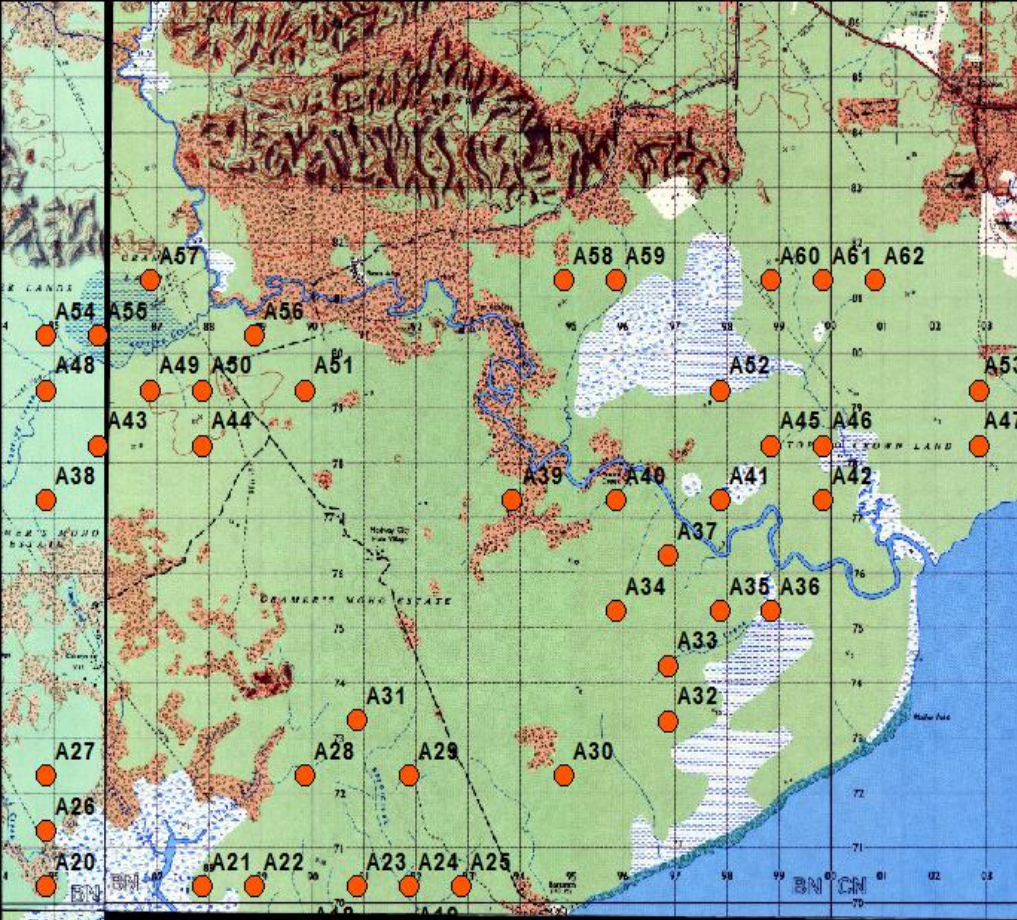


# Relations with Maya of Toledo

---

- 3 Long-term Community Forestry licenses (Conejo, Santa Teresa, Boom Creek)
- A 4<sup>th</sup> being discussed (Sundaywood)
- Rosewood Inventory in Toledo in collaboration with TAA









# Indigenous Maya and REDD+

---

- Appreciation of the concepts and significance of REDD+
  - IP Consultation Framework (June 14<sup>th</sup>, 2014) built on the REDD+ Consultation Protocol
  - Can be adopted by broader GOB
- Capacity challenges in GOB and Maya Organizations
  - R+CU is essentially a 1 woman team (60% forest cover)
- Readiness funds will help alleviate these challenges
  - Deepen and strengthen dialogue
  - Implement Consultation Protocol
  - Build organizational capacities
  - Strengthen REDD+ CU for Readiness Implementation
  - Dialogue, analysis of land tenure and carbon rights





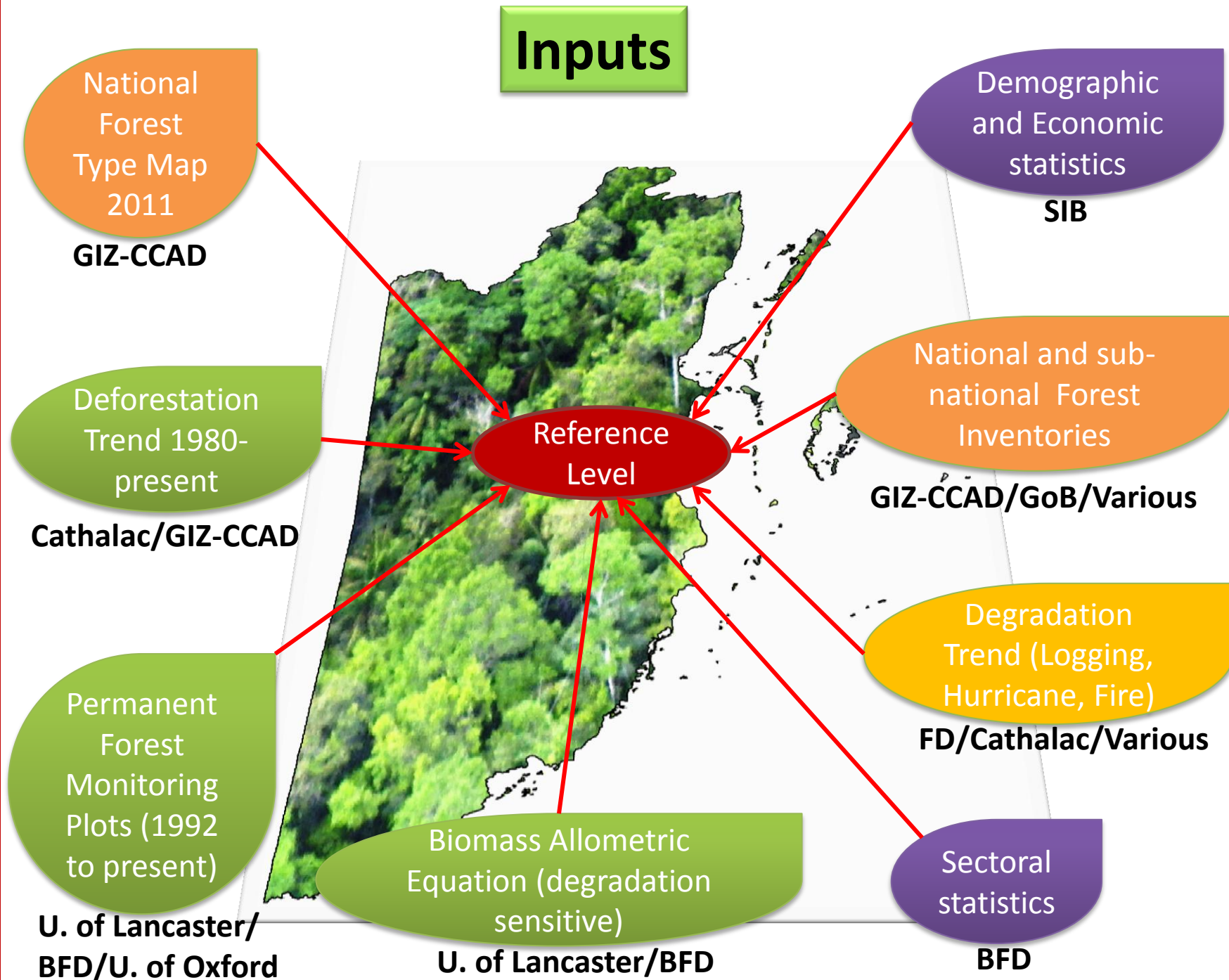
**REDD+**  
Reducing Emissions from Deforestation and Forest Degradation



## 2d. Social and Environmental Impacts

- Diagnostic work for SESA is based on C-2 of RPP.
- Stakeholder analysis and consultation for development of ESMF (build on Early Dialogue)
- ESMF will be based on inputs from SESA.
- Social Impact Assessment including gender considerations in line with Bank IP OP 4.10.
- GRM to address E&S issues that arise will be established.
- No Resettlement under Belize REDD+ initiative planned or envisioned.

# Reference Level Setting





## 4a. Three-tiered Monitoring Program

- Level 1: Monitoring of Deforestation/Forest Cover (near real-time)
  - MODIS RapidFire
  - Wall to Wall OLI8 forest cover maps
  - Ground-truthing
- Level 2: Monitoring Forest Carbon Stocks
  - Permanent Sample Plots (1990 to present)
  - Undisturbed, logged, hurricane and fire affected forests
  - Continued measurement and increase in PSPs
- Level 3: Monitoring Emissions from Drivers of Deforestation & Degradation
  - Focus on hotspots and adapting strategies for these
  - In depth analysis of trends in drivers of degradation

Increasing intensity



**REDD+**  
Reducing Emissions from Deforestation and Forest Degradation



## 4b. Information System for Non Carbon Benefits

---

- Standards Monitoring Group
- Forest Information System
  - Land use and forest cover change
  - SFM and Logging Data
  - PSP data
  - Illegal activities
- Safeguards
  - Benefit sharing
  - Livelihood changes
  - Governance changes





**REDD+**  
Reducing Emissions from Deforestation and Forest Degradation



## 6. Program Monitoring and Evaluation

- Monitoring and Evaluation Working group of RASC
- The Framework is broken down into sub-components, outcomes and outcome indicators
- Timeframe
- Responsible Bodies
- [REDD Readiness Activities Monitoring Framework.docx](#)

# 5. Schedule and Budget

<b>Total Budget by Component</b>	
<b>Component</b>	<b>Thousand US\$</b>
Component 1: Organize and Consult	1,345
Component 2: Prepare the REDD+ Strategy	2,866
Component 3: Develop a National Forest Reference Emission Level and/or a Forest Reference Level	290
Component 4: Design Systems for National Forest Monitoring and Information on Safeguards	588
Component 6: Design a Program Monitoring and Evaluation Framework	69
<b>TOTAL</b>	<b>5,158</b>

<b>Anticipated Sources of Funding for REDD+ Strategy (thousand US\$)</b>						
<b>Source</b>	<b>2015</b>	<b>2016</b>	<b>2017</b>	<b>2018</b>	<b>Total</b>	<b>%</b>
<b>FCPF</b>	1406	996	838	560	<b>3800</b>	74
<b>GIZ</b>	390	245	0	0	<b>635</b>	12
<b>GEF-KBA</b>	90	55	50	25	<b>220</b>	4
<b>GEF-BEA</b>	42	41	0	0	<b>83</b>	2
<b>GoB</b>	105	105	105	105	<b>420</b>	8
<b>Total</b>	<b>2,033</b>	<b>1,442</b>	<b>993</b>	<b>690</b>	<b>5,158</b>	100

# THANK YOU



- **Contributing Authors & Consultants**
- **Stakeholders**
- **GIZ REDD+ Program**
- **The Nature Conservancy**
- **All the RPP Reviewers**
- **FMT, TAP, PC of FCPF**













to be  
Bored and  
Lost!

I don't want  
FALSE INF.

I don't want  
to confuse anyone  
or create false  
expectations

To be given  
false <sup>Info</sup> about how  
to help preserve our  
forest.

False info  
False Promises

Not to be a waste  
of time.

INACURATE  
INFORMATION



To be here  
after 5pm

I want to gather  
The best Informa-  
tion we could  
gather

Enrique Cruz  
I don't want no  
Environmental  
Damage

no underones  
~~Calendonia~~  
Calendonia

LONG  
PRESENTATIONS  
OR  
SPEECHES

DON'T KEEP  
QUIET- MAKE  
A CONTRIBUTION

DON'T Be  
technical in the  
Presentations

I don't want  
To Leave with  
Be well Pama

Dont want  
to go back to  
My Community









Highways  
Forest  
Houses  
Swamp  
Farms  
Villages



Philip Goldson  
Highway

Sand-Hill  
Junction







## Imagine There Was No Forest ! ...

- Increase in poverty
- Climate change
- More crime
- Migration
- Increased cost of living - have to buy more ! e.g. - no forest for hunting
- No beauty
- More flooding
- Drought increase (forests keep the soil moist)
- Less wildlife
- Construction materials reduce
- Less wood for carving
- no protection from the sun (people, livestock)
- infertile soils
- Less oxygen
- Increase in temperature

























1. Education - TAA / Devca  
can. (Grant  
Training)
2. identify benefits
3. TAA / ~~DAVEO~~ (need to establish  
protocol)
4. Documentation (Digital)
5. Zone Com. for Education
6. Train young people
7. Best practice
8. Representation (Tolobo) name
9. Participation (ER FPIC)
10. Consultation in local language
11. Monitoring Com.













# REDD+

Reducing Emissions from Deforestation and Forest Degradation

**B E L I Z E**

